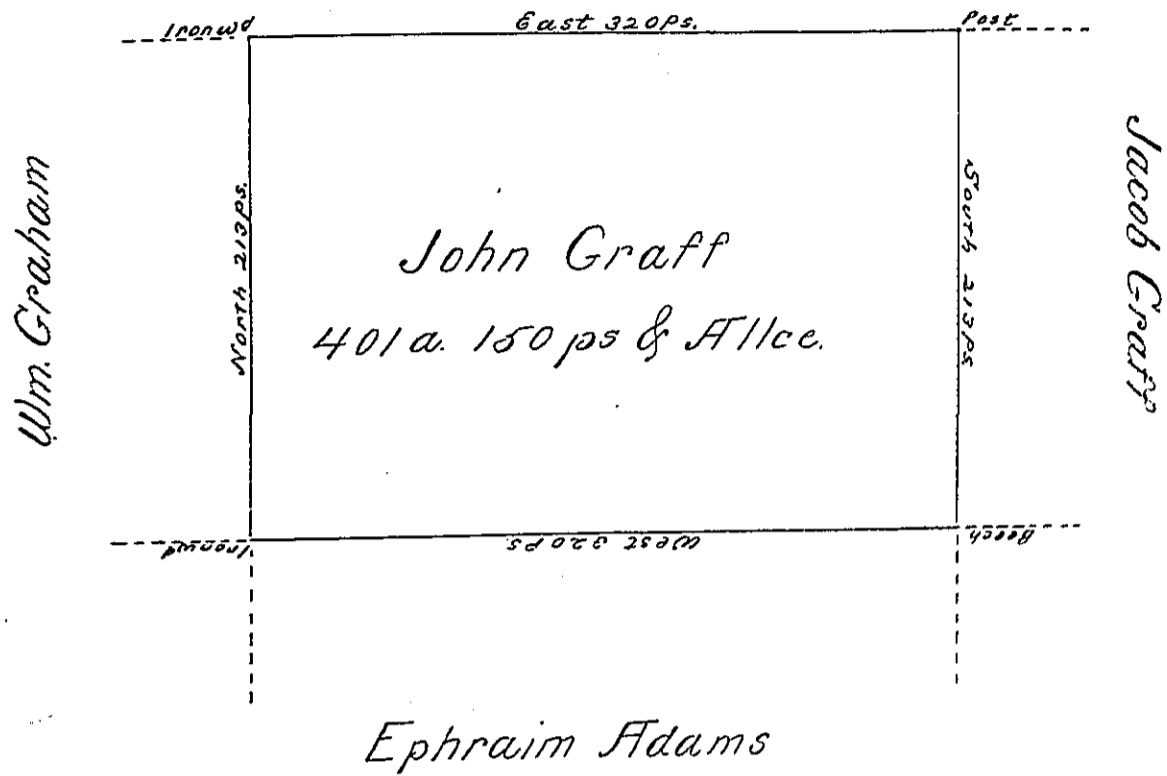


Near the district line No. 1.



Situate on the west side of French
 Creek in Allegheny County containing 401 acres
 and 150 ps and allowance of Six pcent for Roads
 &c. Surveyed the 9th day of October 1794 In pur-
 suance of a warrant bearing date the 30th day
 of May 1792

Wm. Power Dyser

To Daniel Brodhead Esqr
 Surveyor General

IN TESTIMONY that the above is a copy of the original remaining on file in
 the Department of Internal Affairs of Pennsylvania, made
 conformably to an Act of Assembly approved the 16th day of
 February, 1833, I have hereunto set my Hand and caused
 the Seal of said Department to be affixed at Harrisburg,
 this 11th day of October 1889

James W. Fox
 Secretary of Internal Affairs